

NETZSCH

Proven Excellence.

Spare Parts

DSC 214 - *Polyma*

35909 / Version 1.5 / April 2018

DOCUMENTATION

Sizes of pictures below are standardized. Sizes and dimensions do not reflect the ratio of size between each single part.

Technical data is subject to change.

Transformer for Instrument

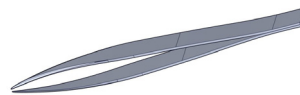
Step up transformer 3000 VA,
primary 100 V, secondary 230 V,
in single enclosure



NGB809366

Tweezers / Glass fibre brush

Universal tweezers, antimagnetic, with
pointed grip ends



GB018256

Weighing tweezers, antimagnetic,
with plastic-coated grip ends



NGB805089

Vibration spatula for filling in the samples



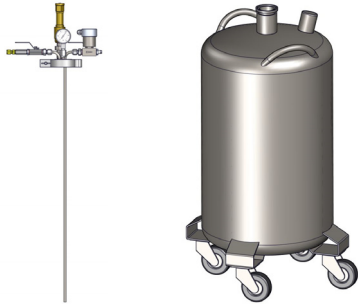
GB016930

Glass fibre brush



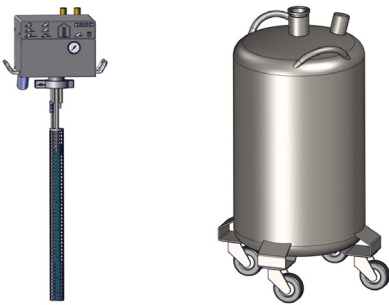
NGB803572

Cooling Systems (GN2/LN2) and Accessories



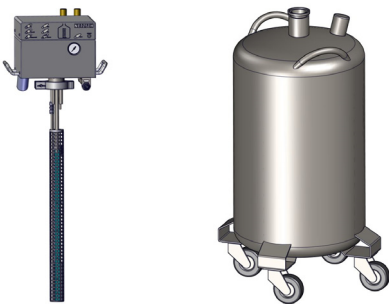
LN2 cooler, compressed gas (N2) operated supply system, with software-controlled magnetic valve, operating overpressure 0.5 bar, with cooling agent storage tank, made from stainless steel, content 60 l, with four mounted castors \varnothing 100 mm and carrying handles.

6.351.35-00.0.00



LN2 multimode cooling system for LN2 or GN2 operation, with heated supply system, integrated control electronics, with LN2 cooling agent tank from stainless steel, capacity of 60 l, with 4 castors \varnothing 100 mm, with level indicator and level control

OCC30060B10.000-00



LN2 multimode cooling system for LN2 or GN2 operation, with heated supply system, integrated control electronics, with LN2 cooling agent tank of stainless steel, content 60 l, with 4 castors \varnothing 100 mm, with level indication and level control. With supplement to fill the cooling agent tank without having to dismount the supply system, includes LN2 magnetic valve (inbuilt in the supply system), connection tube (1.6 m long) to storage tank (maximum operation pressure 1.5 bar), handle with start button and safety valve. (A storage tank for re-filling - e.g. 300 liter - is not included, see NGB806594)

OCC30060B15.000-00

Silencer for cooling gas outlet pipe (LN2/GN2)



6.240.10-90.4.00

Storage container for LN2 made of stainless steel, 300 l, integrated pressure built-up, maximum operating over-pressure 1.5 bar, with pressure tank certificate
(Note: Not suited for public transportation.)



NGB806594

Tension ring DN 50 KF



GB425134

Centering ring with seal



GB523805



Add-on kit for LN2 multi mode cooling system OCC30060B10.000-00 to fill the cooling agent tank without having to dismount the supply system, includes LN2 magnetic valve (for mounting into the supply system), connection tube (1.6 m long) to the storage tank (maximum operation over pressure 1.5 bar), handle with start button and safety valve.
(The storage tank is not included, see NGB806594, mouting needs a visit by Customer Service.)

OCC30060B01.030-00

Extension of supply tube, 0.6 m,
for CC200, for CC 300 and LN2 Cooler



6.353.1-95.1.00

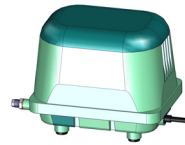
Extension of supply tube, 1.2 m,
for CC200, for CC 300 and LN2 Cooler



6.353.1-95.2.00

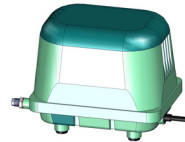
Air Cooling Systems and Accessories

Linear small compressor for cooling purposes,
complete with connection kit, for DSC 204 F1,
DSC 214, DSC 200 F3 und DSC 3500
(230 V, 50 Hz/60Hz)



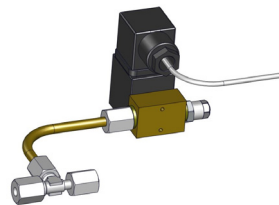
6.351.21-00.0.00

Linear small compressor for cooling purposes,
complete with connection kit, for DSC 204 F1,
DSC 214, DSC 200 F3 and DSC 3500
(115V / 60 Hz)



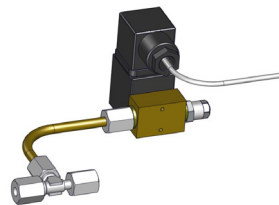
6.351.28-00.0.00

on-off valve kit for compressed air cooling,
input pressure max. 2 bar
absolute (1 bar overpressure)
(230 V 50 Hz/60 Hz)



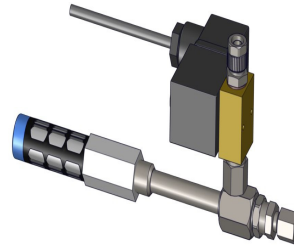
6.351.22-10.0.00

on-off valve kit for compressed air cooling,
input pressure max. 2 bar
absolute (1 bar overpressure)
(115 V / 60 Hz)



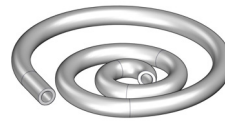
6.351.22-11.0.00

Cooling device for DSC 204 F1, DSC 200 F3 and DSC 214 based on pressurized air. For minimum temperature of 0°C or below (dependent on air pressure). Includes cold air generator and software controlled magnetic valve.
REQUIREMENTS AT CUSTOMER'S SITE:
Pressurized air, throughput approx. 200 l/min, min. pressure 6 bar, max. pressure 10 bar, oil-free, dry (pressure dew point less 5 °C), filtered (25 µm or better).
(230 V 50/60 Hz)



6.351.31-00.0.00

Tubing, Ø 8 x 1 mm, polyamide



GB524507

Intracooler Cooling Systems and Accessories

intracooler 40
cooling system supplement (compressor cooling) for installation into DSC 214 and DSC 200 F3
(230 V / 50 Hz)



NGB805287

Intracooler 40
cooling system supplement (compressor cooling) for installation into DSC 214 and DSC 200 F3
(115 V, 60 Hz)



NGB805286

Intracooler 70
cooling system supplement (compressor cooling) for installation into DSC 214 and DSC 200 F3
(230 V / 50 Hz)



NGB806297

Intracooler 70
cooling system supplement (compressor
cooling) for installation into
DSC 214 and DSC 200 F3
(115 V / 60 Hz)



NGB806298

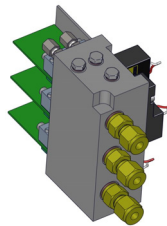
Step down transformer, 3000 VA,
primary 230 V, secondary 115 V,
in single enclosure



NGB803883

Gas supply and Accessories

MFC gas control block for installation into DSC
214 Polyma, with 3 inputs and 2 outputs, for
non-corrosive and non-explosive gases/gas
mixtures, calibrated for N₂, default conversion
factors for O₂, He, Ar, CO₂ and synthetic air,
other gases/gas mixtures on request,
flow rate (0) ...5 ... to 250 ml/min with a
resolution of 1 ml/min with N₂,
for software-programmed control and
registration of the gas flows.



DSC21400A10.200-00

Gas flow control device for 3 gas pipes, with 3
control valves, 3 flow-meters,
measuring range twice 6 ... 70 ml (two purge
gases) and 5 ... 190 ml/min (protective gas),
free-standing



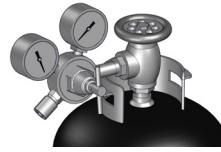
6.240.20-40.0.00

Gas pressure reducer for N₂, two-staged, with
indicator for cylinder und working pressure,
regulating valve OPN: 6.240.6-68.1



6.240.6-68.1.00

Gas pressure reducer for He and Ar, two-staged, with indicator for cylinder and working pressure, regulating valve OPN: 6.240.6-68.2



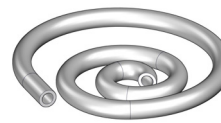
6.240.6-68.2.00

Gas pressure reducer for O₂, two-staged, with indicator for cylinder and working pressure, regulating valve OPN: 6.240.6-68.3



6.240.6-68.3.00

Teflon hose
ID ø 4 mm
OD ø 6 mm (PTFE)



GB641832

Tubular stiffener from stainless steel,
for hose Ø 6 x 1 mm



GB345594

Collet,
for hose Ø 6 x 1 mm



GB345620

Clamping ring Swagelok,
rear,
Ø 6 mm, brass



NGB801211

Clamping ring Swagelok,
front,
Ø 6 mm, brass



NGB801212

Clamping ring kit Swagelok,
Ø 6 mm,
stainless steel

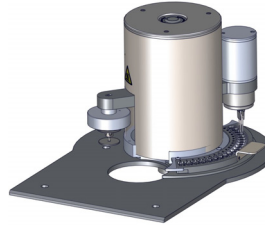


GB345717

ASC 200 and Accessories

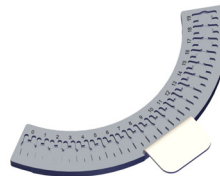
Sample changer supplement for DSC 214 for the automatic measurement of 20 samples, with removable carousel, complete with control electronics.

Proteus software extension for automatic sample changer DSC 214 for sample definition, control of the automatic sample changer, macro recorder for automatic evaluation, integrated detailed help
Detailed information: see Technical Data Sheet (Precondition: Proteus software for DSC 214).



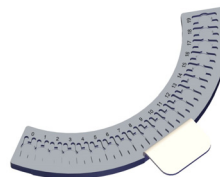
ASC21400A00.000-00

Autosampler tray for 20 samples



ASC200F3A02.000-00

Autosampler tray for 20 samples
Only usable with crucible NGB803698,
sample container 6.239.2-64.5 and
sample container 6.240.10-65.1



ASC200F3A03.000-00

Waste receptacle for crucibles and lids, for
ASC214 and ASC209F3
(Note ASC214: only useable with housing
cover inset 49mm deep)
(Note ASC209F3: only useable with housing
cover inset 38mm deep)

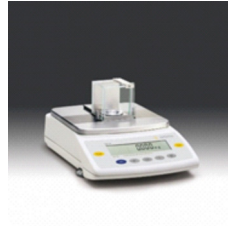


NGB816772

Determination of sample mass

External balance to determine the sample weight, with direct data transfer into the measurement data file, consisting of:
Micro-balance Cubis MSE 3.6P, top-loading, with draft shield
Weighing range: 1.1/2.1/3.1 g
Readability: 0.001/0.002/0.005 mg
Reproducibility: 0.003/0.004/0.005 mg
Includes RS 232 connection cable

Remark:
NGB WINDOWS Proteus software, version 4.31 or newer, is required.



6.220.10-99.1.00

External balance to determine the sample weight, with direct data transfer into the measurement data file, consisting of:
Micro-balance Cubis MSU 225 P, top-loading with draft shield
Weighing range: 60/120 g
Readability: 0.01/0.1 mg
Configuration version: motor driven alignment
Verification: standard model with verification certificate
Draft shield: motor driven draft shield
Includes RS 232 connection cable with ionizer

Remark:
NGB Proteus software, version 4.31 or newer, is required.



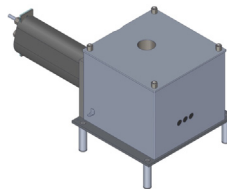
6.220.10-99.2.00

Device for the determination of density
YDK01MS for external balances
(Cubis balances)

NGB812646

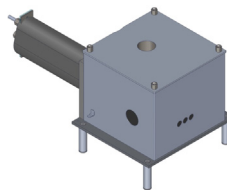
Replacement cells and cell accessories

Replacement cell for DSC 214, including heater, sensor, cooling block, premounted ready for installation
(without cell lid, without stacker plate)



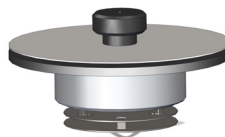
DSC21400C00.912-00

Replacement cell for DSC 214 with coupling for compressor cooling system, including heater, sensor, cooling block, premounted ready for installation
(without cell lid, without stacker plate)



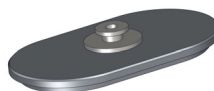
DSC21400C00.913-00

Cell lid for DSC214



DSC21400A06.010-00

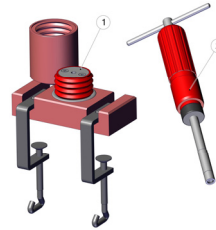
Furnace lid with knob for DSC214



DSC21400A06.020-00

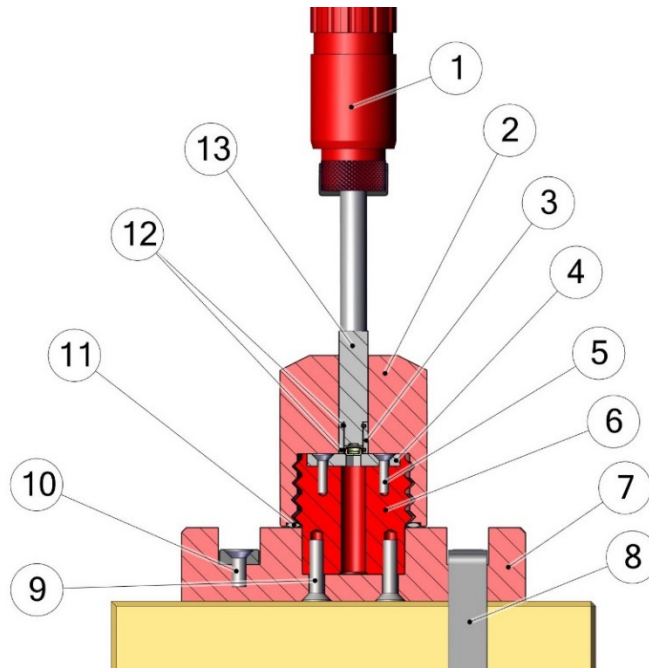
Sealing Press for High Pressure Sample Crucibles (6.239.2-92.4.00)

Sealing press for high-pressure sample crucibles 6.239.2-92.3.00, -92.31.00, -92.6.00, -92.8.00, -92.9.00, -93.3.00, -93.31.00, -93.4.00 and -93.41.00 consisting of base plate, two-part press and adjustable torque wrench, with operating instructions



6.239.2-92.4.00

Component Parts of 6.239.2-92.4.00:



No.	Description	Quantity	Order No.:
①	Torque wrench for sealing tool 6.239.2-92.4.00	1	GB396776
②	Guide	1	400 01 02 *
③	Lid support for sealing tool 6.239.2-92.4	1	NGB802623
④	Plate with hexagon insertion for sealing tool 6.239.2-92.4	1	NGB803373
⑤	Countersunk screw M4x16	2	400 01 05 *
⑥	Foundation	1	400 01 06 *
⑦	Base	1	400 01 08 *
⑧	Setscrew No.6	2	400 01 11 *
⑨	Countersunk screw M6x16	2	400 01 10 *
⑩	Countersunk screw M4x10	2	400 01 09 *
⑪	O-ring Ø 47x4	1	400 01 12 *
⑫	O-ring seal made of Viton (FKM), Ø 8 x 1.5 mm	2	NGB800590
⑬	Bit	1	NGB802622

*= only on request

NETZSCH-Gerätebau GmbH

Wittelsbacherstraße 42

95100 Selb · Germany

Tel.: +49 9287 881-0

Fax: +49 9287 881 505

at@netzsch.com

Customer Service

Tel.: +49 9287 881-555

ngb-service@netzsch.com

www.netzsch.com